

Embedding iDashboards into SharePoint 2008

Overview

Microsoft SharePoint is the central portal for many organizations, and therefore an excellent location to allow its users to view their dashboards. Many organizations choose to segment their portals by functional area, which allows for iDashboards and SharePoint architects to strategically position dashboards as content within the site collections based on a user's role and function. The iDashboards Public Access User account, in conjunction with a SharePoint Web Part, enables this functionality.

iDashboards Public Access User Account

The Public Access User account requires an iDashboards Public Access license. Since a Public Access license allows multiple simultaneous connections to iDashboards via the same Public Access User account, iDashboards can be embedded into multiple SharePoint pages using this account through which many users can gain access to dashboards and charts concurrently. ***The Public Access license allows for only a single set of access permissions to dashboards and charts, therefore all users who utilize the Public Access User account will have access to the same set of dashboards and charts.***

The Public Access User account removes the requirement for users to enter a username and password, so as soon as they open a SharePoint page with iDashboards embedded in it the dashboard or chart will be opened automatically.

To setup a SharePoint Web Part to utilize a Public Access User account, you simply need to include in the Web Part an iDashboards URL with the Public Access User Account and ID of the dashboard or chart that you wish to display. The URL should be in the following format:

Embedding a Dashboard:

<http://www.yourcompany.com/idashboards/viewer?guestuser=myguestuser&dashID=1200>

Embedding a Chart: <http://www.yourcompany.com/idashboards/viewer?guestuser=myguestuser&chartID=1200>

(See the iDashboards Administrator Manual for further information on Public Access (Guest) User accounts and Embedded Viewer Mode)

Configure the SharePoint Web Part

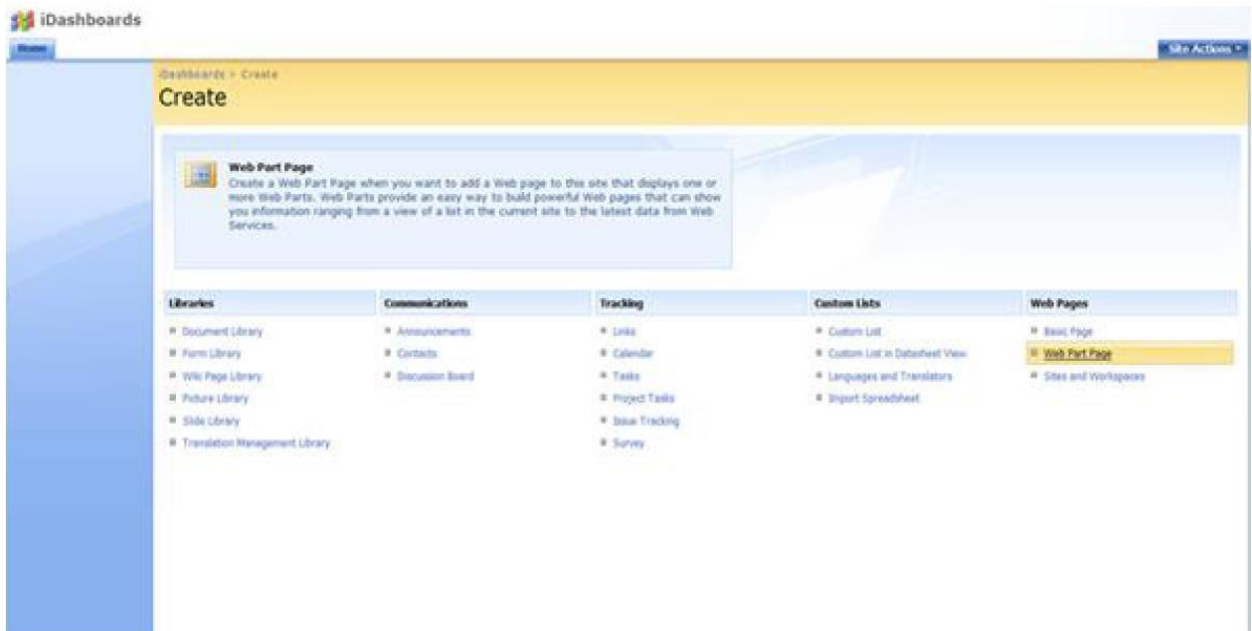
To insert iDashboards dashboards and/or charts into a SharePoint page, use a "Page Viewer Web Part". The Web Part is essentially an independent web browser within the SharePoint page, or an "iFrame".

To create the Page Viewer Web Part, edit the SharePoint page iDashboards is to be embedded in to. Select Site Setting → Create → Web Part Page. Ensure that "Web Page" is selected as the item to display in the web part. Next, enter the Link URL using the previously mentioned format. The iDashboards Public

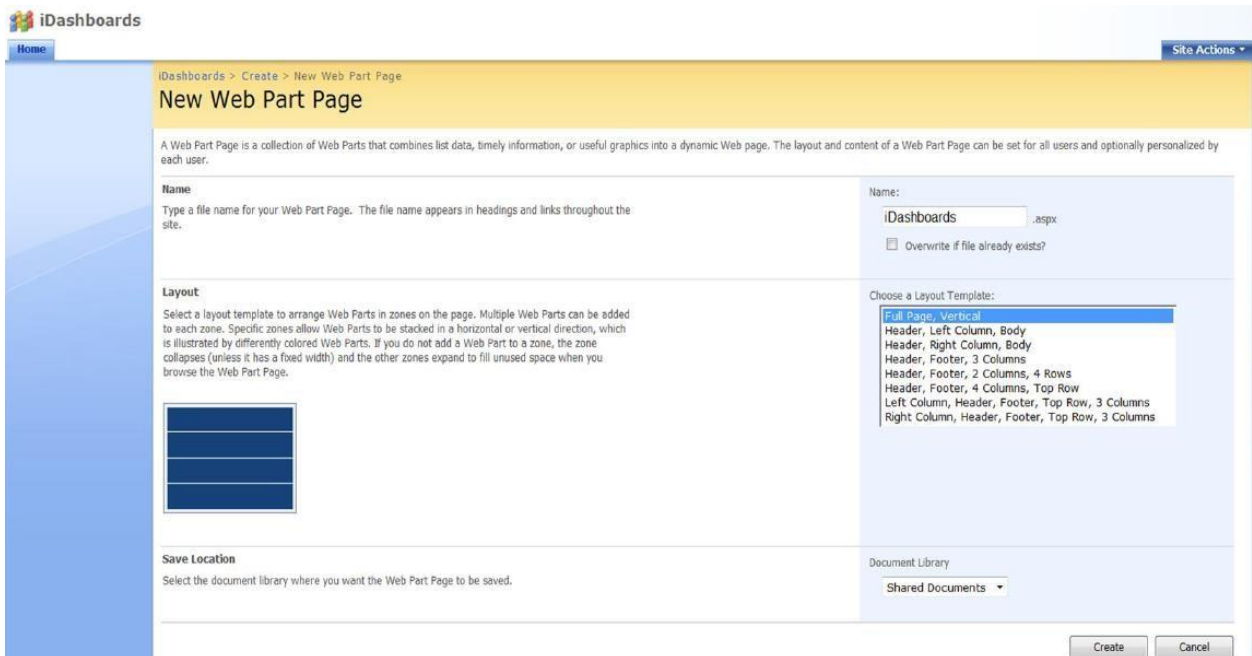
Access User account allows for the viewing of dashboards/charts based upon the unique syntax invoked related to the applicable dashboard/chart ID. Finally, adjust the Appearance, Layout, and Advanced sections as necessary. Click “OK” to save the changes. The SharePoint page will refresh with the web part pointing to the iDashboards installation.

Step-By-Step Instructions

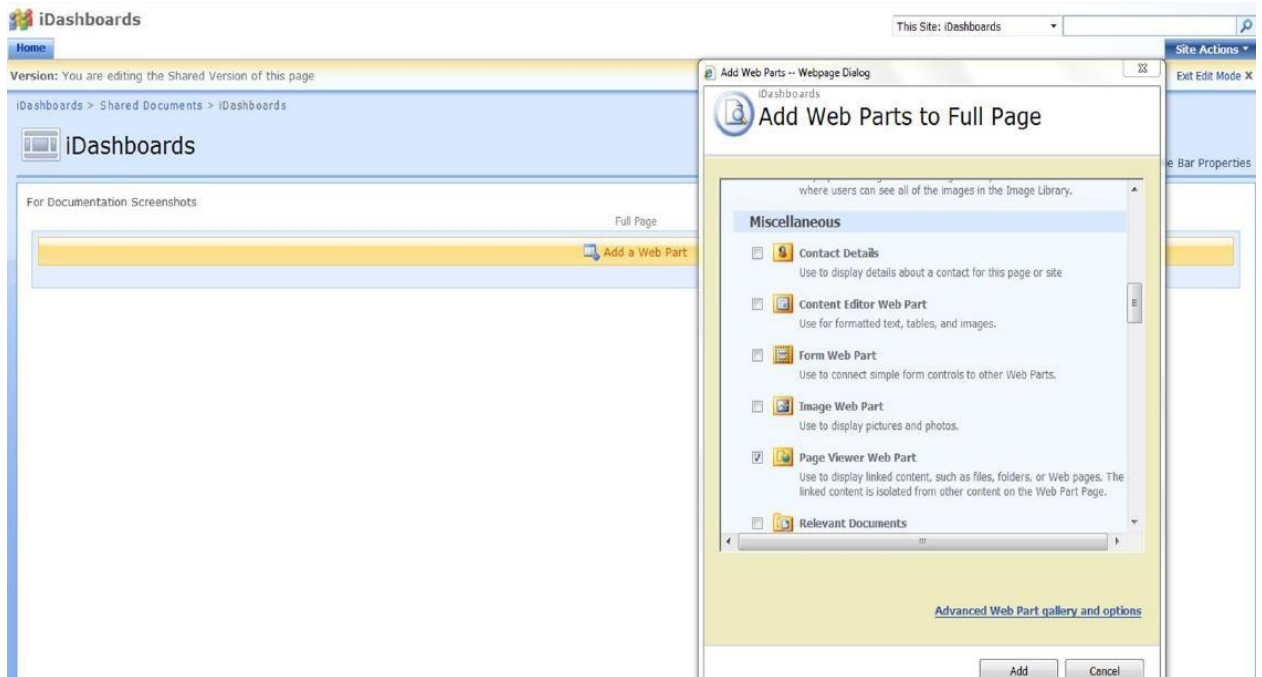
1. Select Site Settings → Create → Web Part Page



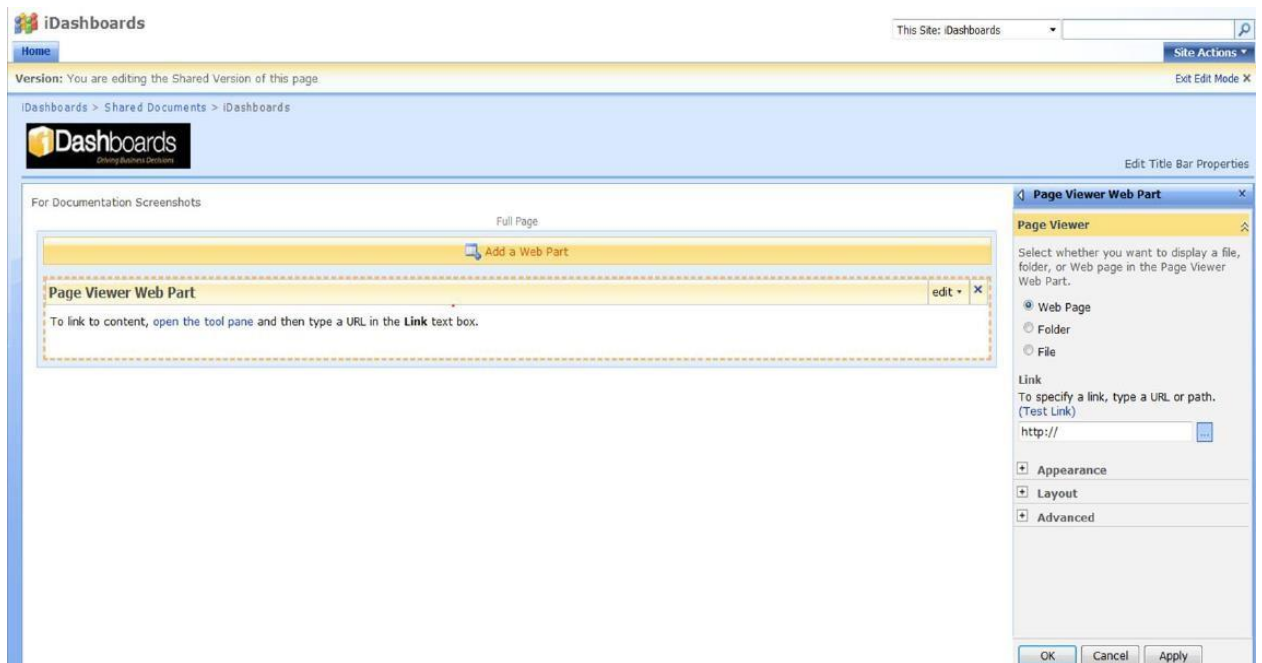
2. Select Create → Full Page Vertical → Select Document Library of choice → Create



3. Select Add a Web Part → Page Viewer Web Part → Add



4. Select Edit → Modify Shared Web Part (Page Viewer Properties Web Pane will appear) □
 Ensure that Web Page is selected
 - Enter the URL to the specific dashboard or chart to appear in the Web Part
 - Expand Appearance and configure the Height and Width to your preferences
5. Select Apply to view and then OK to continue



6. A dashboard or chart is displayed in the SharePoint page

